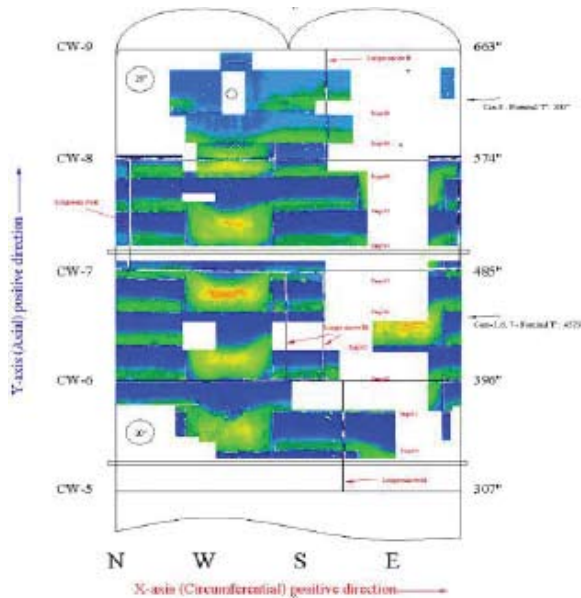


Corrosion and erosion can inflict significant damage and prove costly. Due to the risks involved, it's important to recognize corrosion damage early to assist in operational maintenance.

ACCUSCAN-2009/2010

Can reach scan speeds of up to 40"/second and can scan on diameters as small as 3" pipe and 24" long in length. The scanner and motor controller housing are sealed to prevent moisture damage. This scanning system is a slave system, which allows for easy access to the encoder feedback from the scanner and directing it into any UT system with encoder inputs with a single encoder whip that comes with the scanner.



SERVICE SAFETY RELIABILITY

For general inquiries, please email: info@focusndt.com.
Toll-Free: 1.877.862.1638

ALBERTA

817-15th Avenue SW, Unit 702
Calgary, AB T2R 0H8
T. 403.479.4341
F. 403.500.1231

Suite #192-2301 Premier Way
Sherwood Park, Edmonton, AB
T8H 2K8
T. 780.449.1638
F. 780.449.1640

ONTARIO

821 Vickers St North
Thunder Bay, ON P7C 4B9
T. 807.623.1916
F. 807.684.0948

BRITISH COLUMBIA

38-1839 1st Ave
Prince George, BC
V2L 2Y8
T. 250.614.3696
F. 250.564.3697



FOCUSONNDT.COM

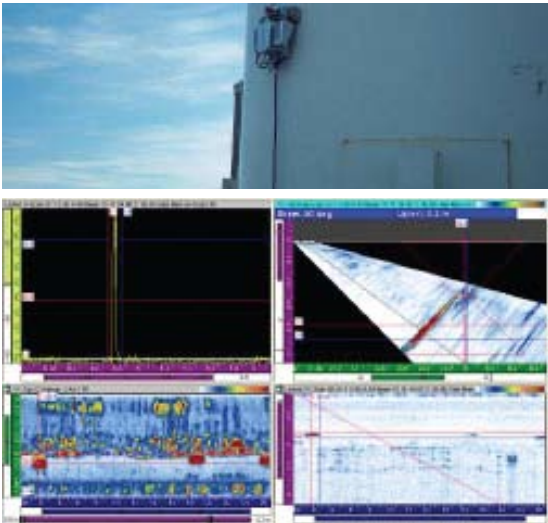


CORROSION MAPPING

Improved Probability
Of Detection with
Repeatable Results



CORROSION/THICKNESS SURVEY WITH AUTOMATED MAGNETIC CRAWLER



Phased Array Bull Gear Inspection

- Mining Industry
- Rod and Ball Mills
- Pulp & Paper Industry
- Kiln Gears

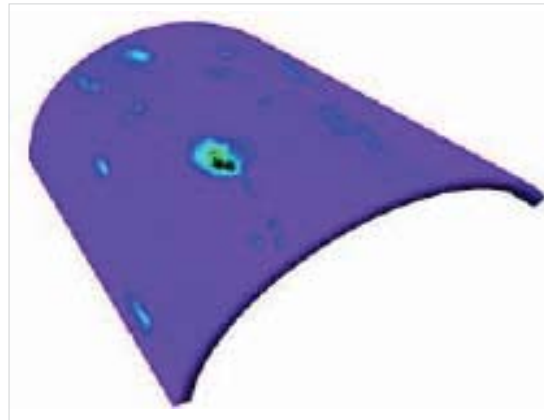
Phased Array Weld Inspection

- Oil and Gas Plant Pressure Vessel as per ASME Section 8 Div. 1 & 2 Code Case 2235
- Fabrication Shop Piping Examination as per B31.3 Code Case 181, B31.1 Code Case 179

Beam Profile Of Phased Array Weld Inspection

- Scan plan are developed and approved by Level III prior to examination for permanent documentation and repeatable examination

LASER MAPPER



The Laser Mapper makes laser corrosion mapping practical. It works on smooth, shiny and dull or rough surfaces without any special surface preparation. The Laser Mapper is capable of scanning at high resolutions at up to 30 inches per second

Features

- Fast-Scan
- Accurate to within $\pm 0.002"$ (0.051mm)
- Eliminates problems such as water loss
- Portable

